

# COVID-19 Testing Explained

**BEGIN**

Use the chart below to help determine which route you should take to receive COVID-19 testing in Flathead County.

1

## Symptomatic



"I have symptoms of COVID-19."

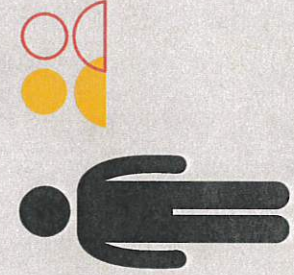
### How to receive testing:

Call your healthcare provider, or call the Kalispell Regional Healthcare 24-Hour Line at 406-890-7272. You will be referred to receive testing at one of the four respiratory screening facilities in Flathead County.

*Please note, it can take several days to receive your results. Stay home and follow instructions given to you by your healthcare provider or KRH.*

2

## Close Contact



"I received notification that I am a close contact to a positive COVID-19 case."

### How to receive testing:

Close contacts can call their healthcare provider or the KRH 24-Hour Line at 890-7272 to receive testing.

- For people who are identified as a close contact without symptoms, quarantine can end:
  - On day 10 without testing.
  - On day 7 after receiving a negative test result. The individual must be tested on day 5 of quarantine or later.

*Please note that close contacts can only receive proof of their test results directly from the testing facility. The Flathead City-County Health Department cannot provide or verify negative test results at this time.*

3

## Traveling



"I am traveling to an area that requires a negative COVID-19 test result to enter."

### How to receive testing:

Call your healthcare provider, or call the Kalispell Regional Healthcare 24-Hour Line at 406-890-7272. You will be referred to the proper testing facility.

*Please note, individuals must pay a fee to receive a COVID-19 test in this circumstance. Additionally, results are not guaranteed to come back within 72 hours.*